

GENERAL INFORMATION:

The Vistawall Series 1000 (1¼ x 4) and 2000 (1¼ x 4½) system represents the latest in product development technology complemented by dealer on-the-job input and experience. Proper use of these systems will assure optimum results in erection and long term performance.

Vistawall does not control the application nor selection of its product configurations, sealant or glazing materials and assumes no responsibility thereof. It is the responsibility of the owner, architect and installer to make these selections in strict compliance with applicable laws and building codes.

PROTECTION AND STORAGE:

Handle the material carefully. Do not drop from the truck. Stack with adequate separation so that the material will not rub together. Store material off the ground. Protect against the elements and other construction hazards by using a well ventilated covering. Remove material from package if it is wet or is located in a damp area.

CHECK MATERIAL:

Check all material upon arrival for quality and to assure against shipping damage. Any visible damage must be noted on the freight bill at the time of receipt. If a claim is required, then the receiving party must process a claim with the freight company.

Completely check construction which will receive your materials against contract documents. Notify the general contractor by letter of any discrepancies before proceeding with the work. Failure to do so constitutes acceptance of work by other trades.

Check shop drawings and installation instructions to become familiar with the project. The shop drawings take precedence and include specific details for the project. The installation instructions are of a general nature and cover the most common conditions. Due to varying job conditions, all sealants used should be approved by the sealant manufacturer to insure they will function for conditions shown on instructions and shop drawings. They must be compatible with all surfaces in which adhesion is required including other sealant surfaces. Use primers where directed by manufacturer of sealants. Be sure to properly store sealants at recommended temperatures and check sealant for remainder of shelf life before using.

FIELD CONDITIONS:

- Do not install wall if there is a walk way with a downslope towards an entrance or a storefront
- All materials to be installed plumb, level, and true. Aluminum to be placed in direct contact with the masonry or incompatible materials should be isolated with a heavy coat of zinc-chromate or bituminous paint.
- After sealant is set and a representative amount of the wall has been glazed (250 square feet or more), run a water hose to check installation. On large jobs hose test should be repeated during glazing operation. Test should be conducted in accordance with AAMA 501.2 specifications.
- Coordinate protection of installed materials with general contractors and other trades.

CLEANING MATERIALS:

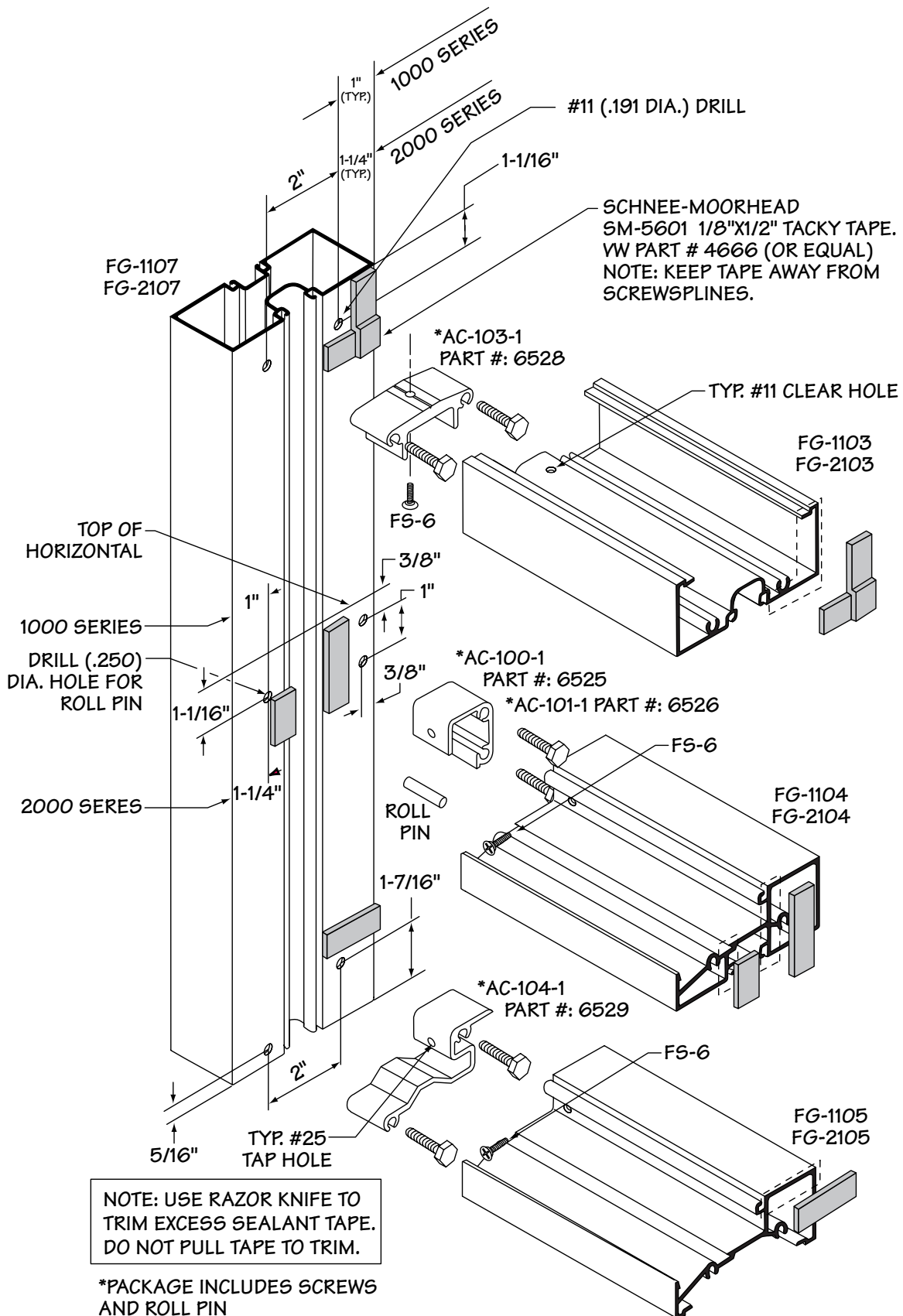
Cement, plaster, terrazzo, alkaline and acid based materials used to clean masonry are very harmful to finishes and should be removed with water and a mild soap immediately or permanent staining will occur. A spot test is recommended before any cleaning agent is used.

Over the years many components were added to our flush glaze systems. Items like FG-1135 flashing and the two piece MO-244 and MO-242/243 head can are not shown in this manual but remain in the detail catalog and price book. There are many ways to install store front products. This manual represents recommendations for best results.

EXPANSION JOINTS:

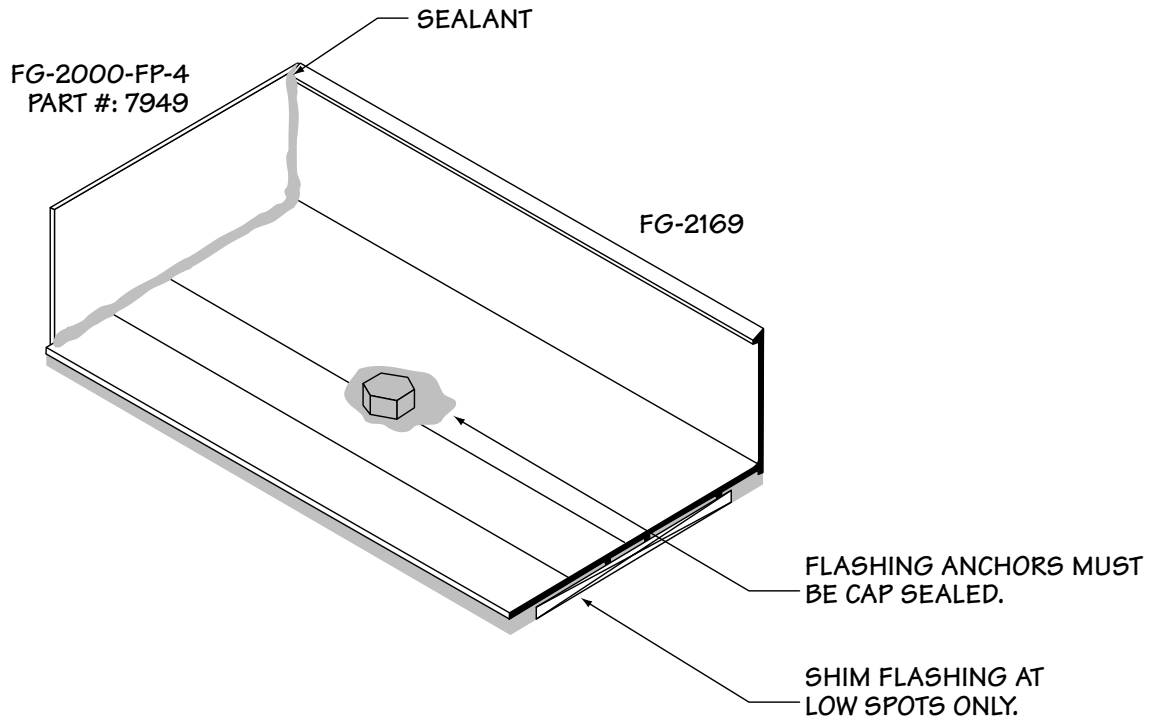
Expansion joints and perimeter seals shown in these instructions and in the shop drawings are shown at normal size. Actual dimensions may vary due to perimeter conditions and/or differences in metal temperature between the time of fabrication and time of installation. For example, a 12 foot unrestrained length of aluminum extrusion can expand or contract ¾ of an inch over a 50° F change. Any movement potential should be accounted for at the time of the installation.

OUTSIDE GLAZE-SHEAR BLOCK-FRAME ASSEMBLY

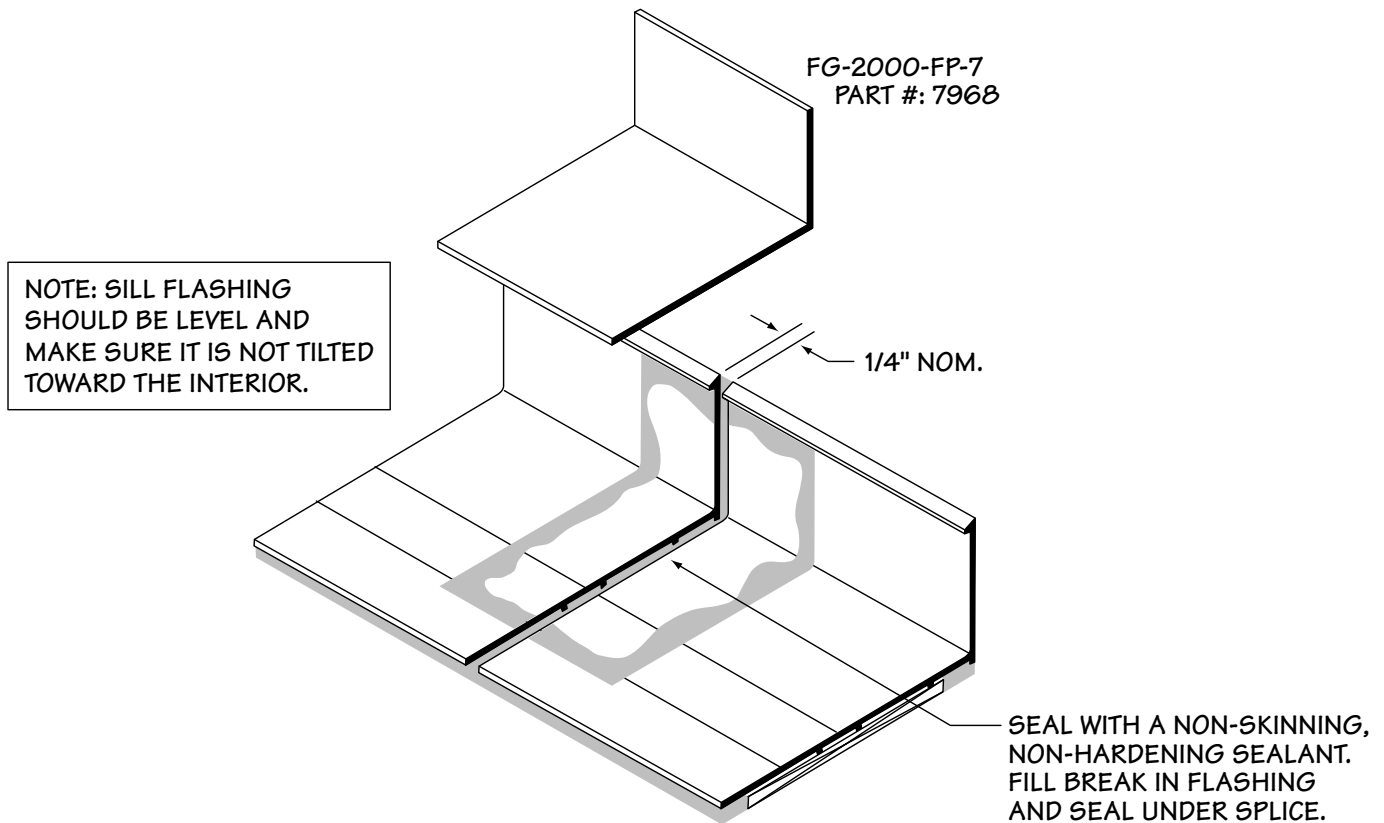


DJ-3 PART # 4560 AND DJ-4 PART # 4561 DRILL FIXTURES ARE AVAILABLE TO AID IN FABRICATION FOR SHEAR BLOCK FRAME ASSEMBLY.

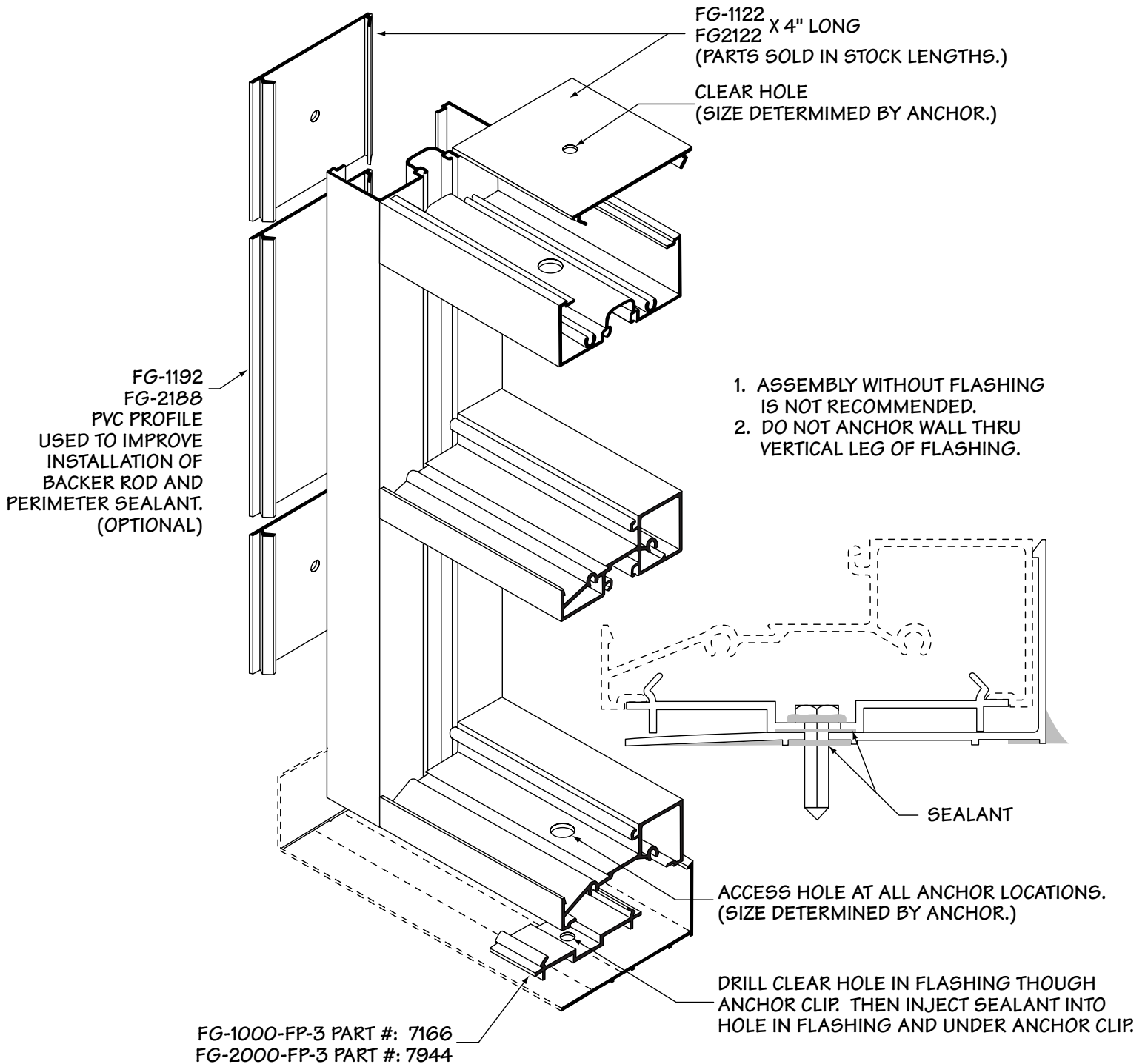
OUTSIDE GLAZE-SILL FLASHING INSTALLATION



SILL SPLICE

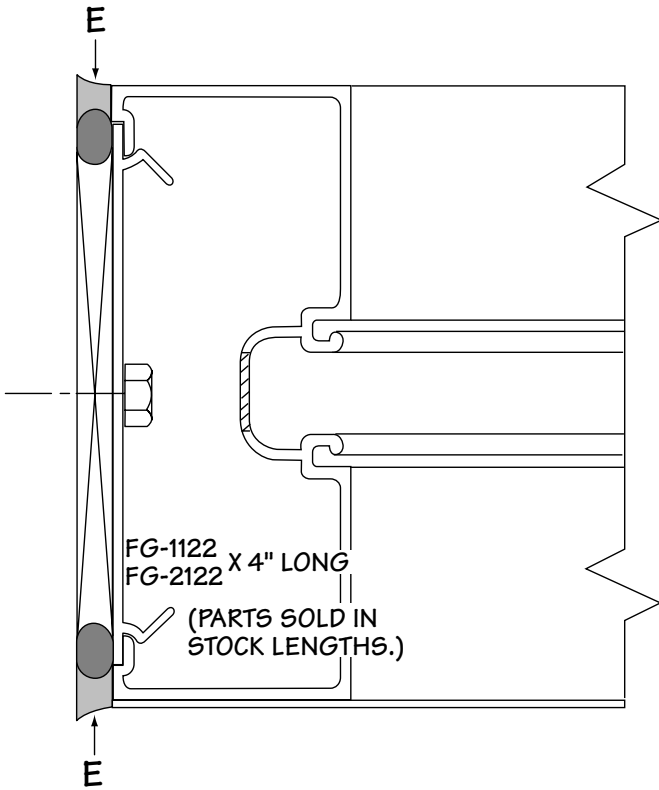
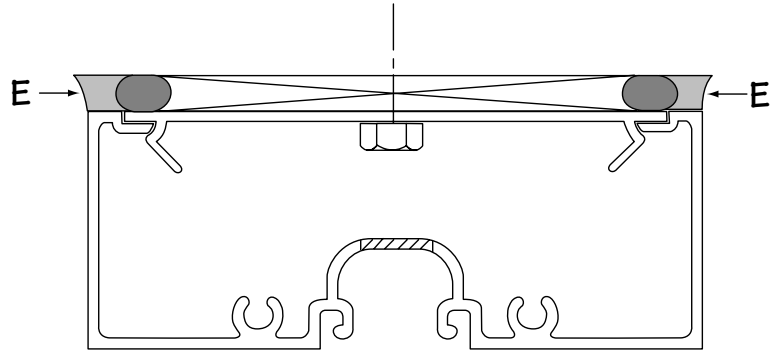


OUTSIDE GLAZE-FRAME INSTALLATION



ANCHOR SIZE AND FREQUENCY SHOULD BE DETERMINED BY STRUCTURAL REQUIREMENTS. SILL ANCHORS FG-1000-FP3/FG-2000-FP-3 AND HEAD ANCHORS FG-1122/FG2122 SHOULD BE LOCATED SO THAT THE ANCHOR IS NOT MORE THAN 4" FROM EACH SIDE OF THE MULLION.

OUTSIDE GLAZE-SILL INSTALLATION AND PERIMETER SEAL



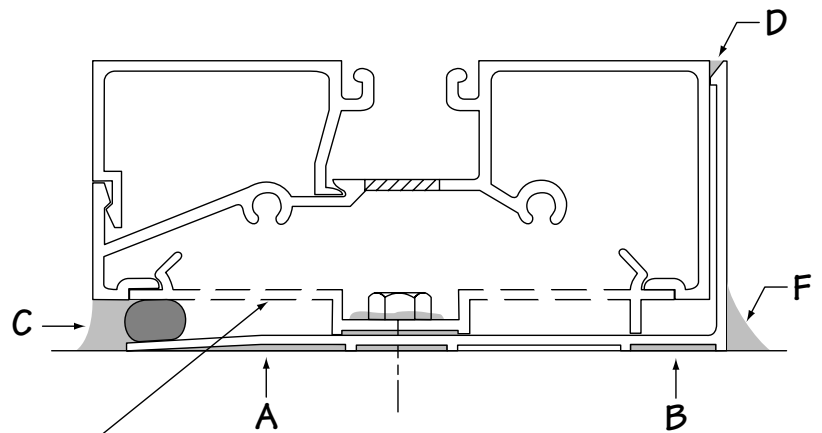
APPLY SEALANT ALONG LENGTH OF SUB SILL AT AREAS A & B.

LAY FLASHING ON SLAB AND SHIM ONLY AT LOW AREAS. RESEAL AT SHIM AREAS.

SPACE BETWEEN SILL AND FLASHING (C) TO BE CONTINUOUSLY SEALED EXCEPT FOR 1/2"-3/4" SPACE UNDER VERTICAL MULLIONS FOR WEEPAGE. ONCE THE WALL IS SECURED, SEAL V GROOVE (D) BETWEEN SILL FLASHING AND BACK OF SILL FLASHING AND BACK OF SILLS.

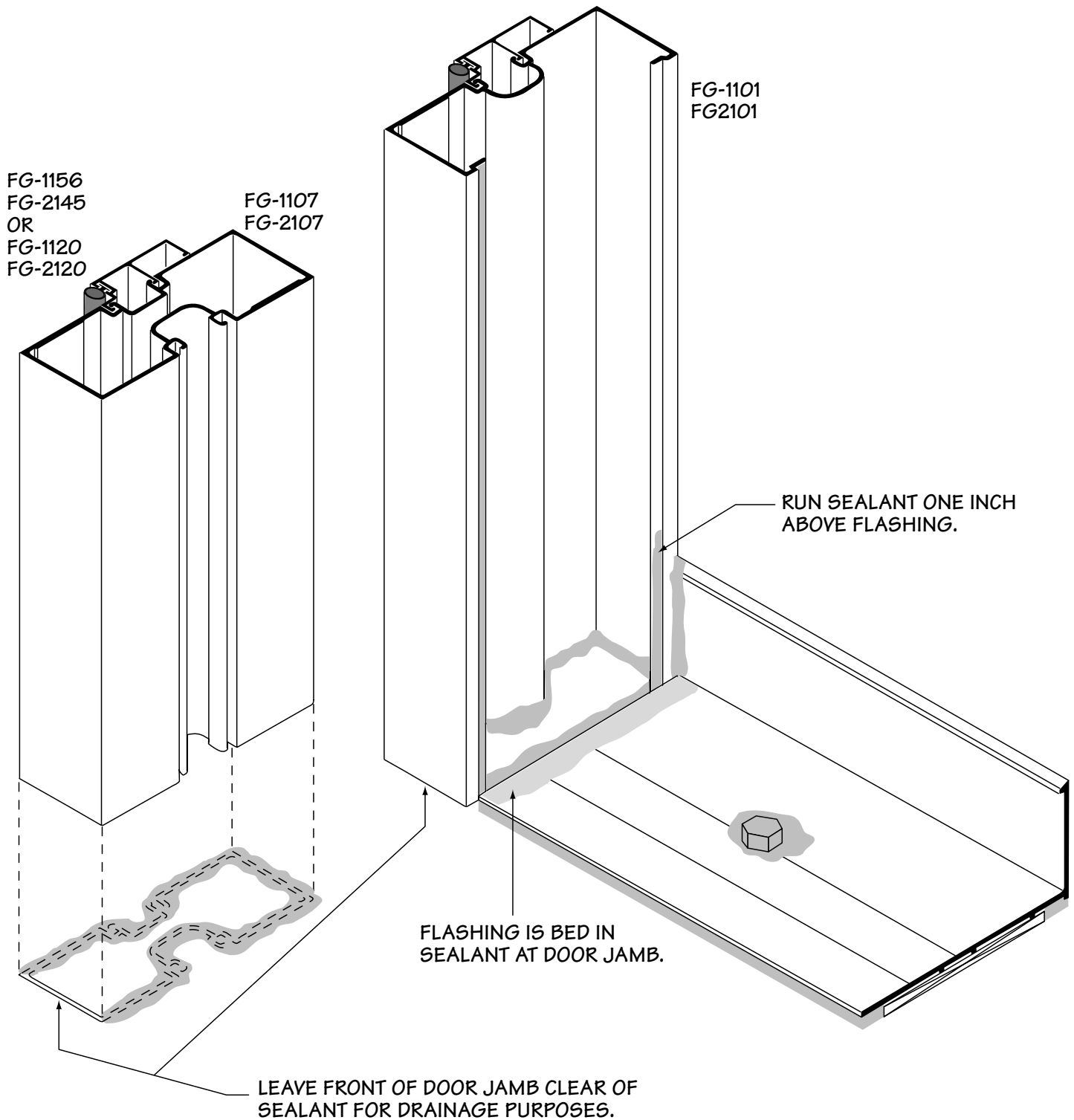
THE QUALITY OF THE INSIDE AND OUTSIDE PERIMETER SEALS (C AND E) MAY BE IMPROVED BY USING FG-1192/FG-2188 RIGID PVC FILLER. THE PART MAY BE USED IN FULL LENGTHS OR CUT INTO PIECES. ITS PURPOSE IS TO PROVIDE SUPPORT FOR THE BACKER ROD REGARDLESS OF JOINT OR SIZE. PERIMETER SEAL (F) IS FOR COSMETIC PURPOSES AND IS OPTIONAL.

NOTE: 1/2"-3/4" WEEP HOLE REQUIRED IN SEALANT AT FLASHING (C) AT CENTER LINE OF MULLION.



FG-1000-FP-3 PART #: 7166
FG-2000-FP-3 PART #: 7944

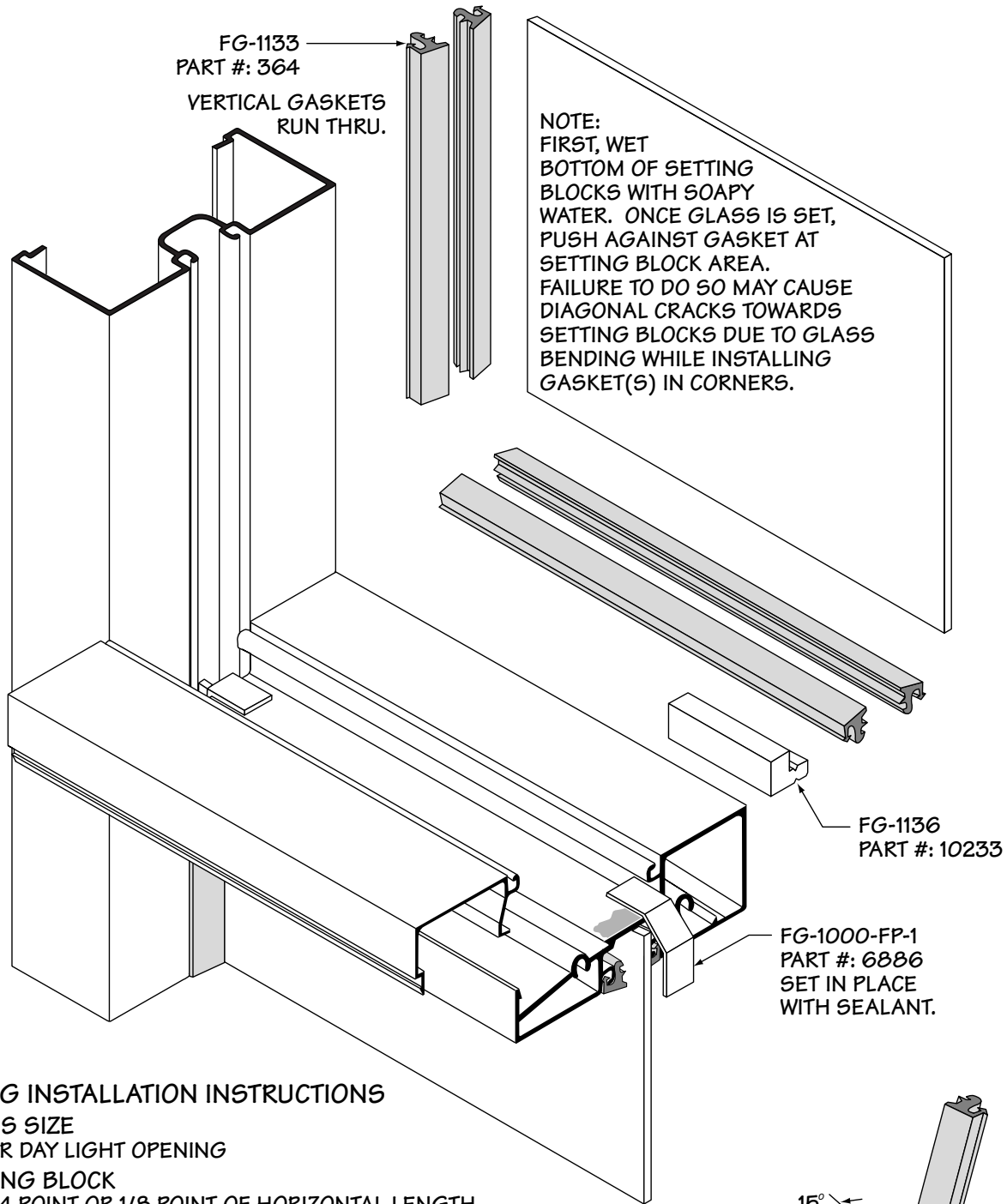
OUTSIDE GLAZE/SEALANT PROCEDURE FOR DOOR FRAME AT FLASHING



WITH SCREW SPLINE HORIZONTAL, USE SHEAR BLOCKS AS SHOWN ON PAGE 5 TO SECURE HORIZONTALS TO TUBULAR FRAME.

DOOR FRAME IS ANCHORED BY FASTENERS THROUGH THRESHOLD AND THROUGH DOOR FRAME HEADER.

OUTSIDE GLAZE-GLAZING PROCEDURE



GLAZING INSTALLATION INSTRUCTIONS

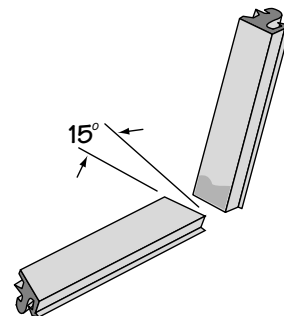
GLASS SIZE
5/8" OVER DAY LIGHT OPENING

SETTING BLOCK
SET AT 1/4 POINT OR 1/8 POINT OF HORIZONTAL LENGTH DEPENDING ON LITE SIZE.

WATER DIVERTERS
GLAZE FROM BOTTOM TO TOP. INSTALL WATER DIVERTERS IN HORIZONTAL ABOVE, AFTER LITE BELOW IS IN POSITION.

GLAZING GASKET
GASKET MAY BE INSTALLED ON ONE OR BOTH SIDES SIMULTANEOUSLY. PROVIDE 3/8" ADDITIONAL GASKET FOR EACH FOOT OF DAYLIGHT OPENING TO PROVIDE ADEQUATE COMPRESSION FOR THE GLAZING INFILL.

NOTE: CLEAN GASKET WITH ISOPROPYL ALCOHOL PRIOR TO SEALING CORNERS.



MITER HORIZONTAL GASKET TO FIT VERTICAL GASKET.

STACK FRAME ASSEMBLY AND INSTALLATION

The assembly and sealant procedures are a part of the installation sequence because of the stacking method.

HEAD CAN:

Anchor screws should be within 4" of each side of the intended mullion location. Head anchors (AC-109-1 PART #: 6554) should be used if the height x width x design load is 500 lbs. or more at the top of the mullion. Normally one anchor screw at the middle of the lite or 24" O.C. is adequate for securing the header. For unusual conditions, consult Vistawalls engineering department.

SILL CAN:

Shim can a minimum 1/4". Anchor sill can 24" O.C. and no more than 4" on each side of intended mullion locations. Be sure weeps are located under center line of mullion. Seal both sides of can.

HORIZONTAL HEAD AND SILL INSERTS:

Members are cut 1/6" less than daylight opening to allow for incremental expansion.

JAMB MEMBERS:

Remember all horizontals are cut 1/16" short. Do not over shim between jamb and structure.

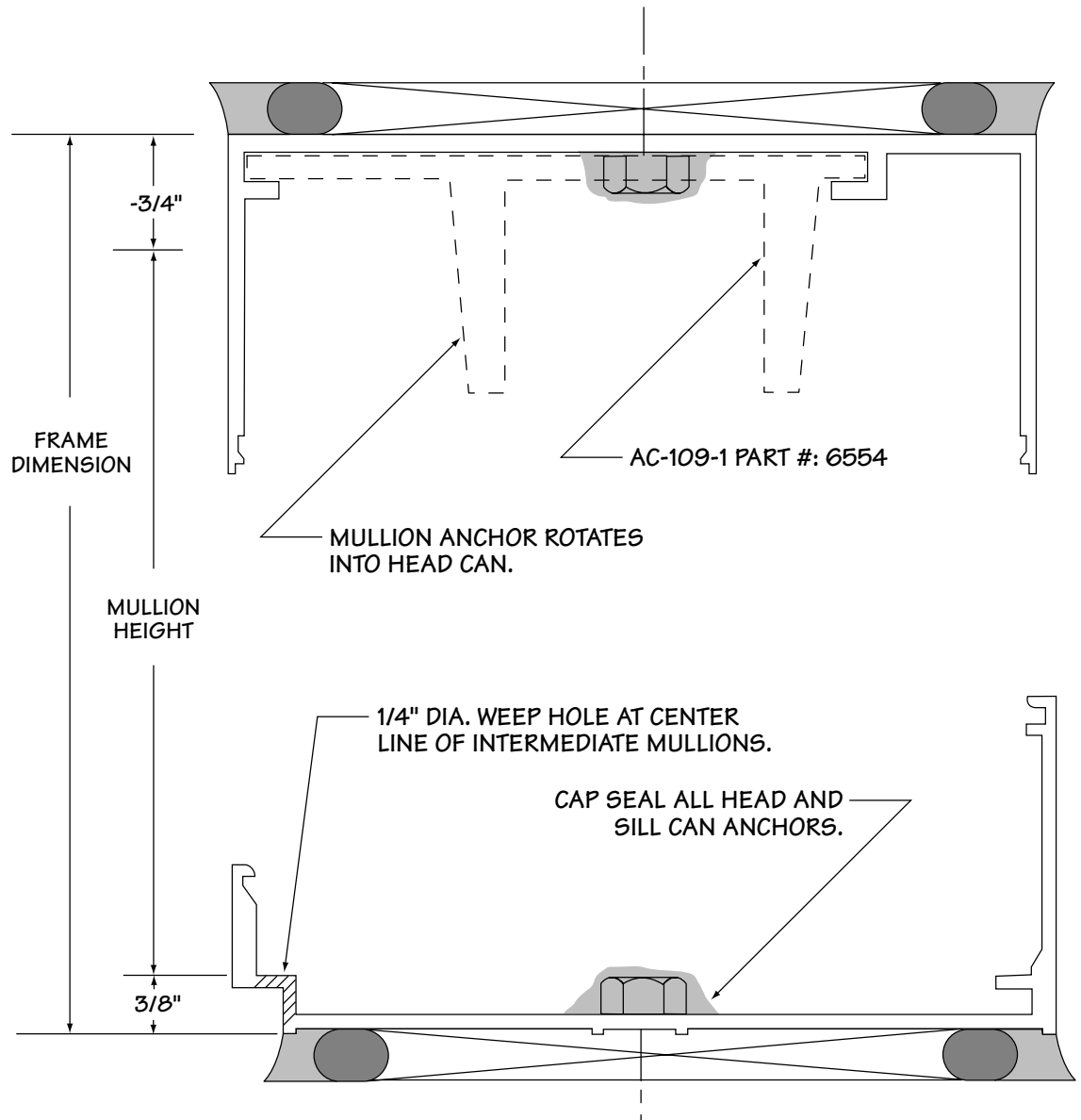
MULLIONS:

Cut mullion length outside frame dimension - 1 1/8". Install mullions by sliding top end over anchor and rotating bottom into position.

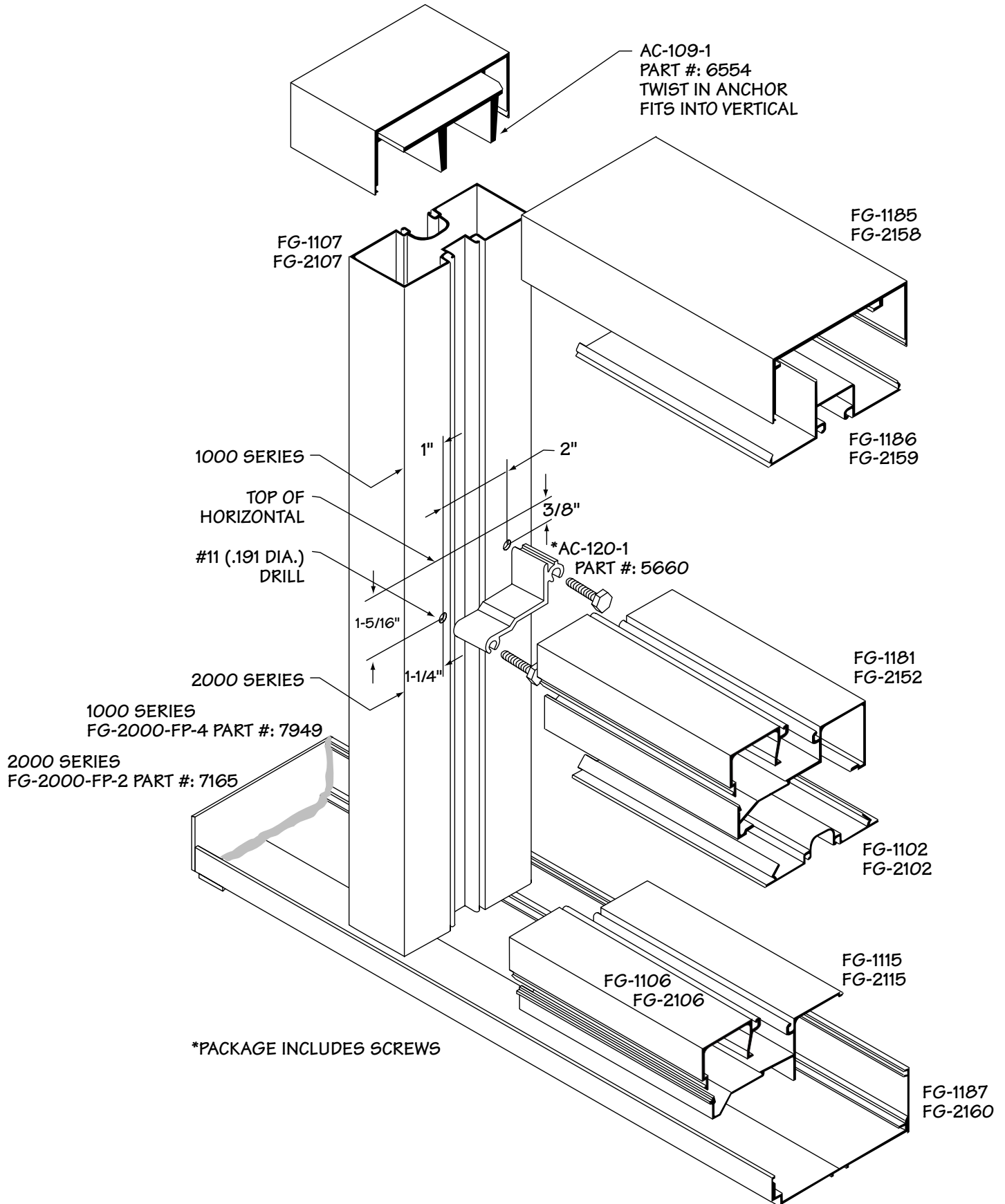
RECOMMENDATION:

Prior to glazing, fill sill cavity with water to assure that end dams and anchors are sealed.

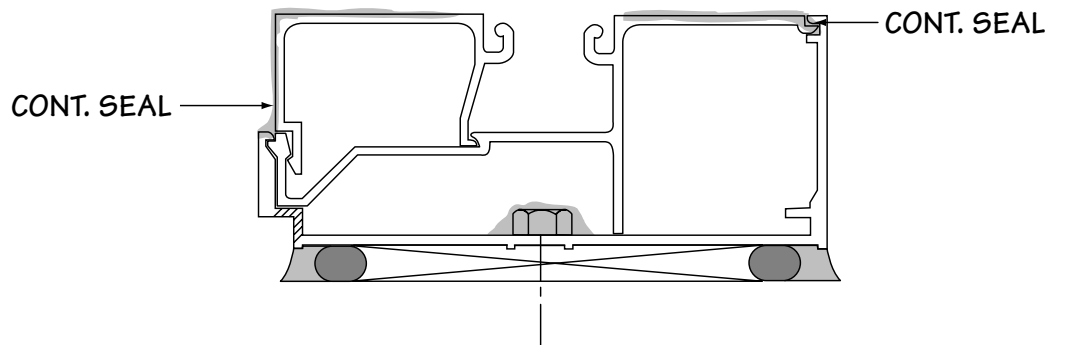
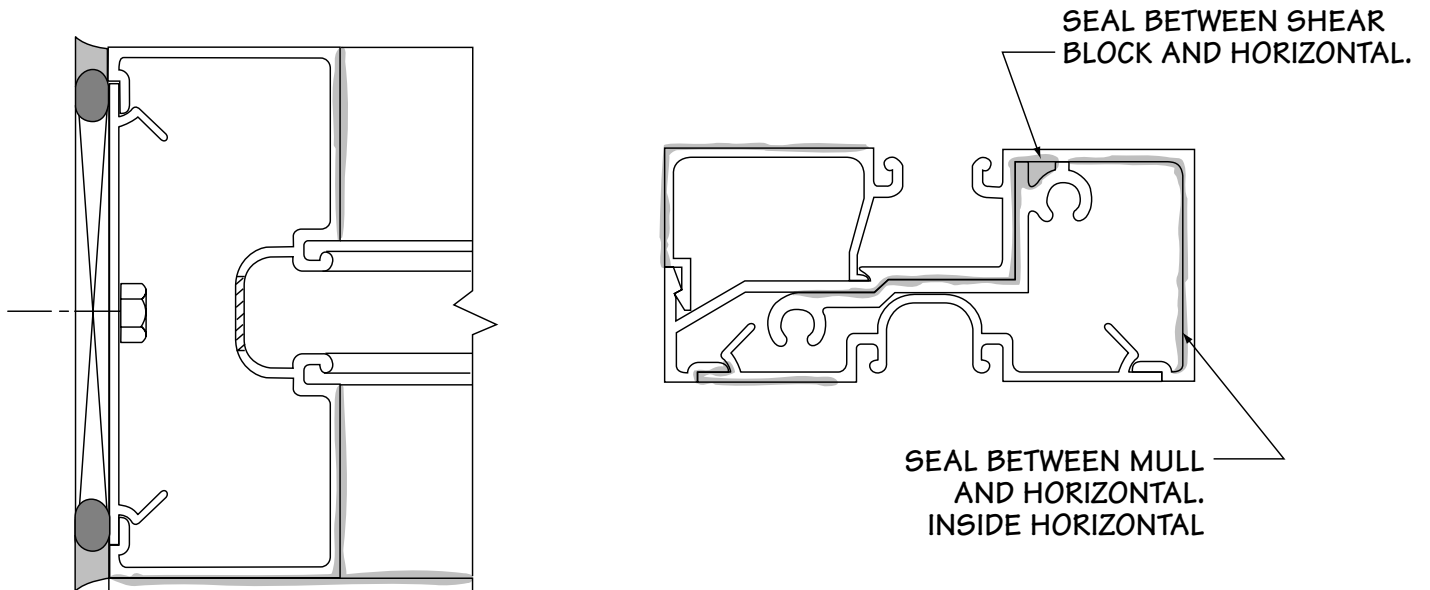
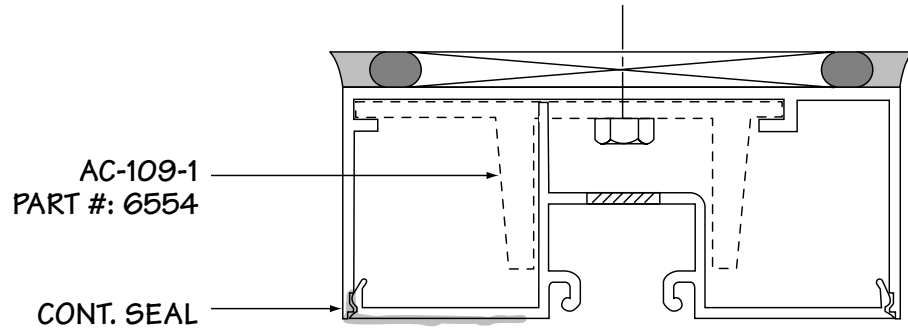
STACK SYSTEM ANCHORING



STACK SYSTEM FRAME ASSEMBLY AND INSTALLATION

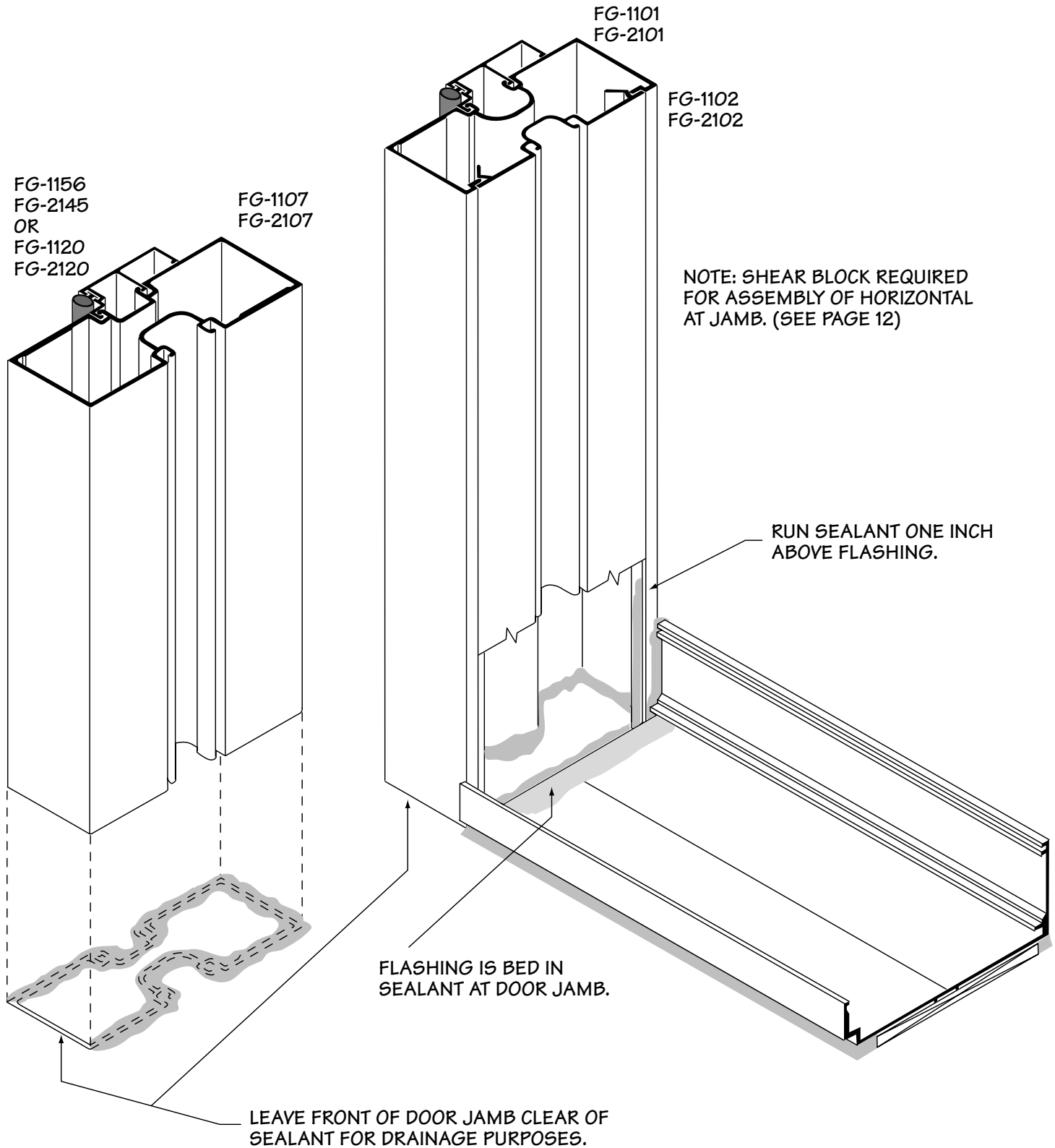


STACK SYSTEM SEALANT PROCEDURES



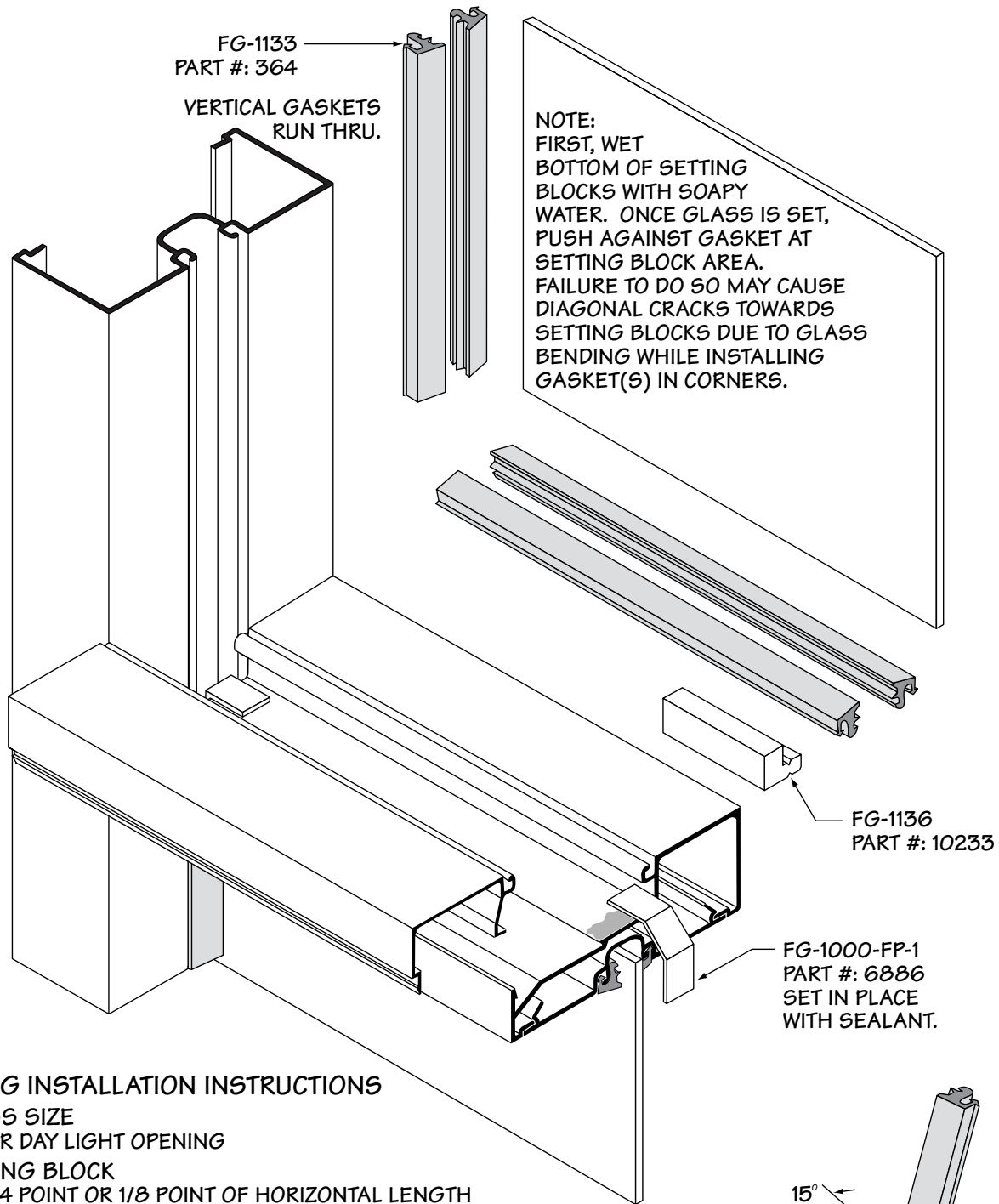
NOTE: THE NATURE OF THE STACK SYSTEM REQUIRES CARE WHEN APPLYING SEALANTS AS SHOWN TO ASSURE PERFORMANCE LEVELS SHOWN IN THE TEST REPORT.

STACK SYSTEM SEALANT PROCEDURE FOR DOOR FRAME AT FLASHING



DOOR FRAME IS ANCHORED BY FASTENERS THROUGH THRESHOLD AND THROUGH DOOR FRAME HEADER.

STACK SYSTEM GLAZING PROCEDURE



GLAZING INSTALLATION INSTRUCTIONS

GLASS SIZE

5/8" OVER DAY LIGHT OPENING

SETTING BLOCK

SET AT 1/4 POINT OR 1/8 POINT OF HORIZONTAL LENGTH DEPENDING ON LITE SIZE.

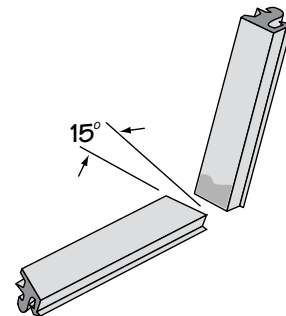
WATER DIVERTERS

GLAZE FROM BOTTOM TO TOP. INSTALL WATER DIVERTERS IN HORIZONTAL ABOVE, AFTER LITE BELOW IS IN POSITION.

GLAZING GASKET

GASKET MAY BE INSTALLED ON ONE OR BOTH SIDES SIMULTANEOUSLY. PROVIDE 3/8" ADDITIONAL GASKET FOR EACH FOOT OF DAYLIGHT OPENING TO PROVIDE ADEQUATE COMPRESSION FOR THE GLAZING INFILL.

NOTE: CLEAN GASKET WITH ISOPROPYL ALCOHOL PRIOR TO SEALING CORNERS.



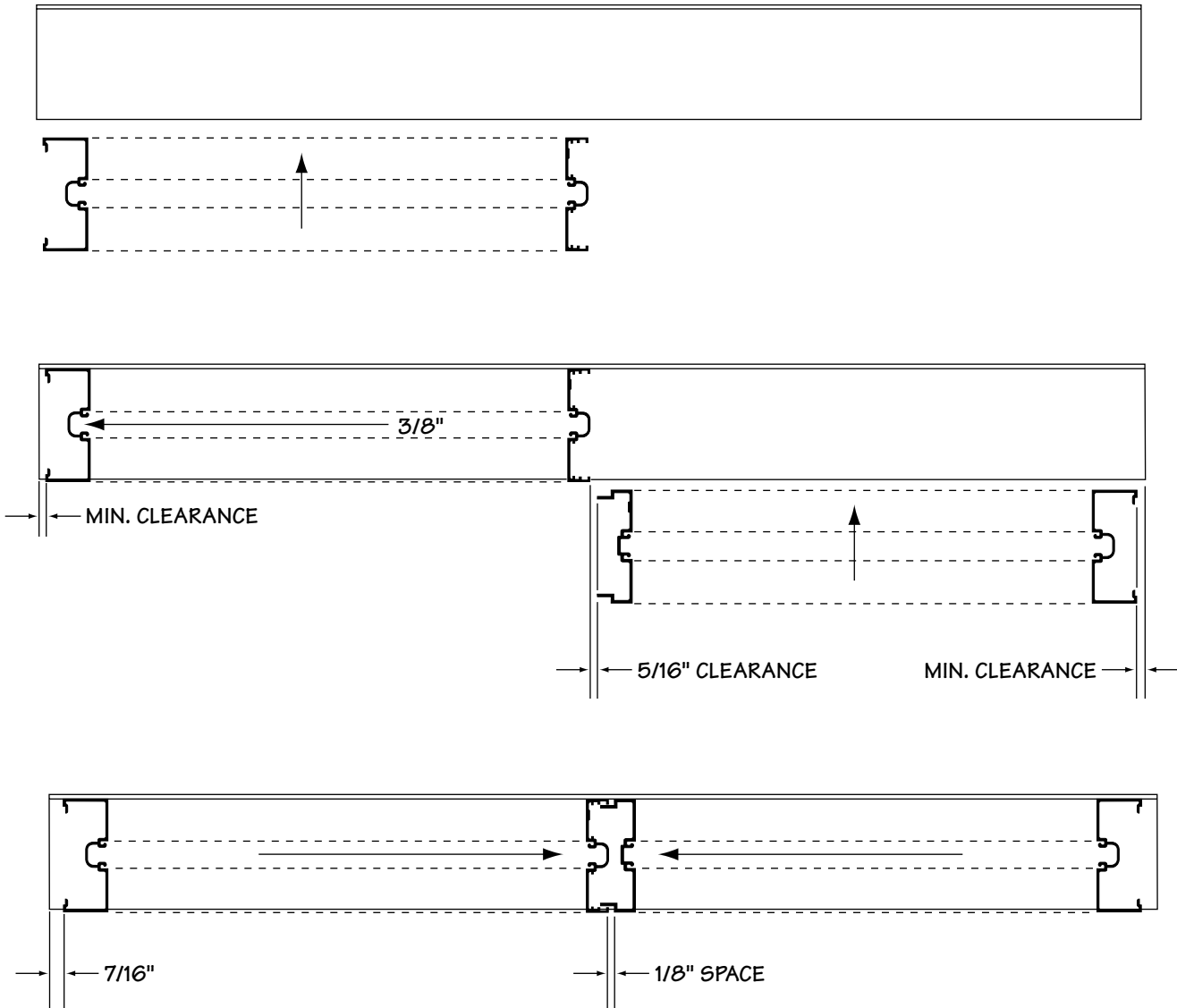
MITER HORIZONTAL GASKET TO FIT VERTICAL GASKET.

FG-2000 SERIES: INSIDE GLAZE, SCREW SPLINE FRAME ASSEMBLY

Most of the extrusions in this system are the same, only the sill and its anchors are different. Notice also, that the tapes used for sealing the horizontals to mullions are located in a different matter.

The sill is designed so that the sill anchors may be cap sealed before the frame is installed. The frame is installed over the sill twist-in anchors. This prevents any additional screws from penetrating the sill and causing leaks under the sill.

Multiple units require the use of split mullions. A minimum of 7/16" clearance between the jamb and sill end dam must be provided. This will provide a minimum of 3/8" clearance to move first unit side-ways to the second unit with the same clearance will clear interlocking legs of the expansion mull. Adjust frame locations before running perimeter seals. Vistawall recommends using FG-2188 vinyl filler to improve the perimeter seal.



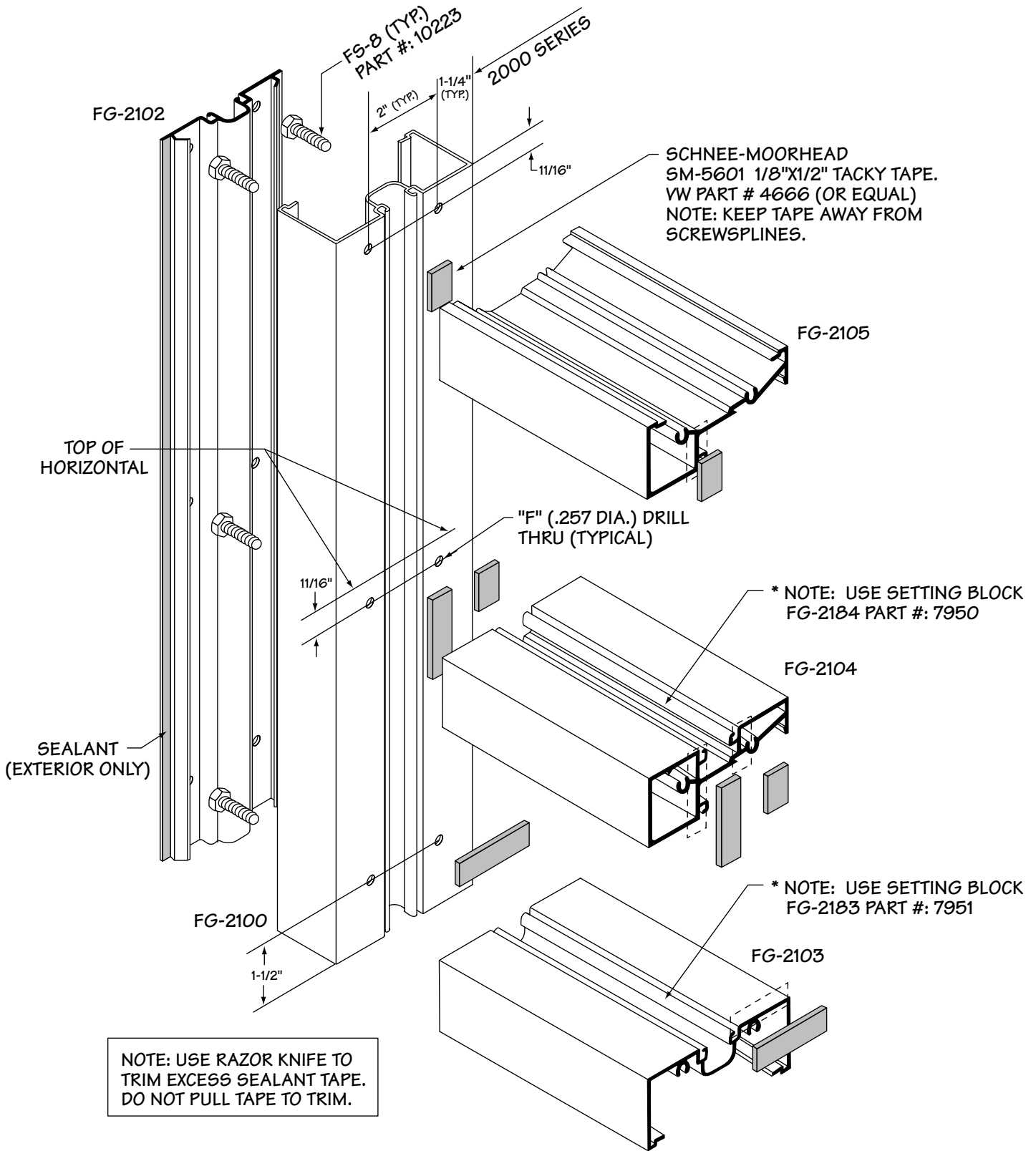
Vistawall does not recommend the shear block method of assembly for inside glazing.

1. Shear block joining does not provide as rigid of an assembly as screw spline. This makes the joint assemblies more susceptible to sealant fail-

ure during the unit installation process.

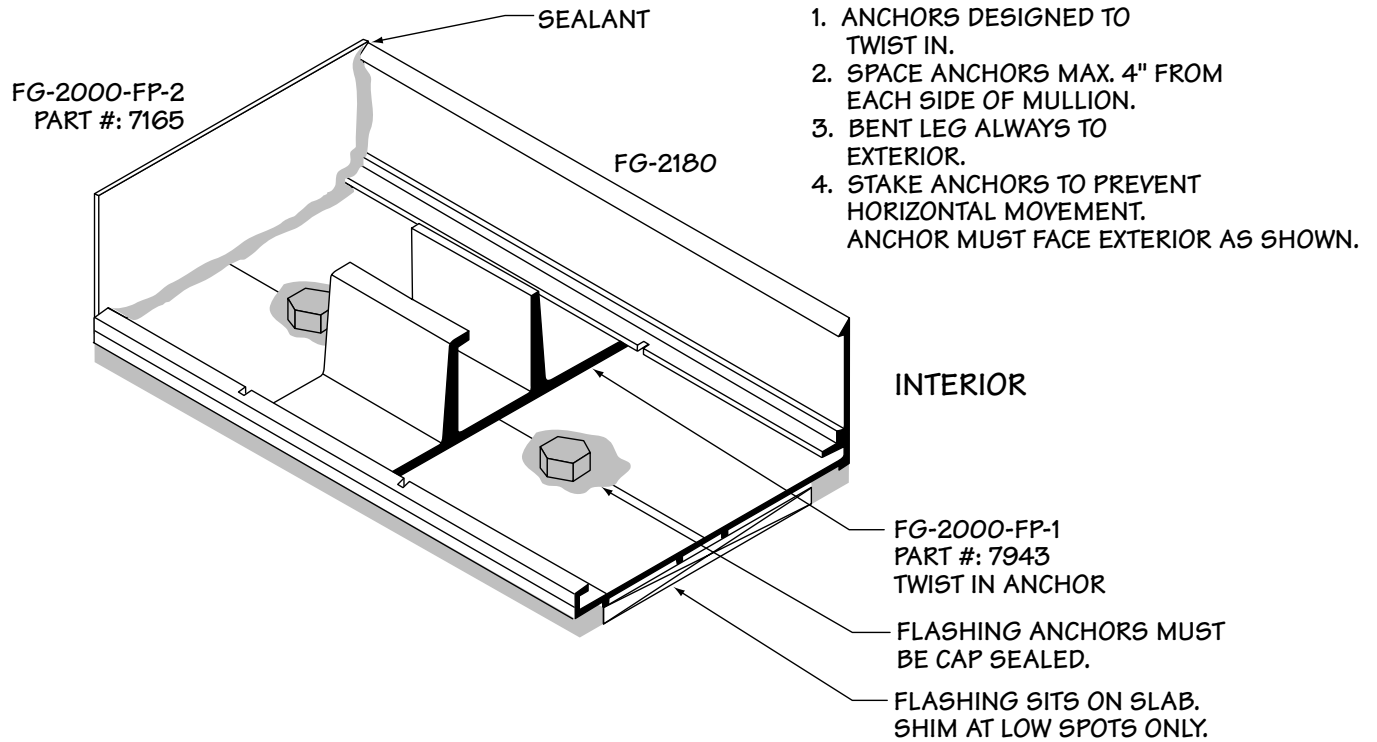
2. The nature of the stack system, see pg. 13, especially an inverted horizontal cannot be sealed with confidence for long term performance.

FG-2000 SERIES INSIDE GLAZE SCREW SPLINE FRAME ASSEMBLY



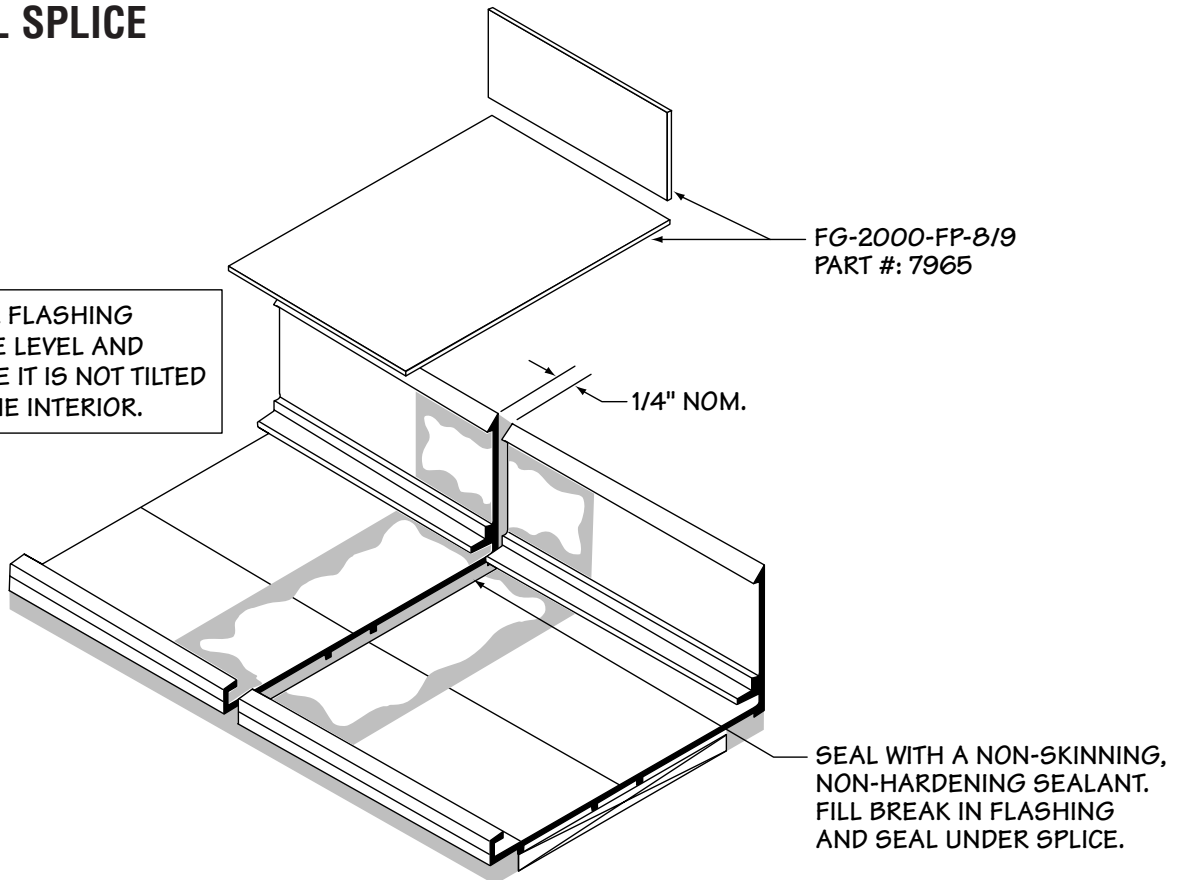
FOR FASTER, MORE ACCURATE HOLE FABRICATION, WE RECOMMEND THE VISTAWALL EZ PUNCH™ FABRICATION TOOL. DJ-5 DRILL FIXTURE PART # 4562 IS ALSO AVAILABLE TO AID FABRICATION FOR SCREW SPLINE FRAME ASSEMBLY.

INSIDE GLAZE SILL FLASHING INSTALLATION

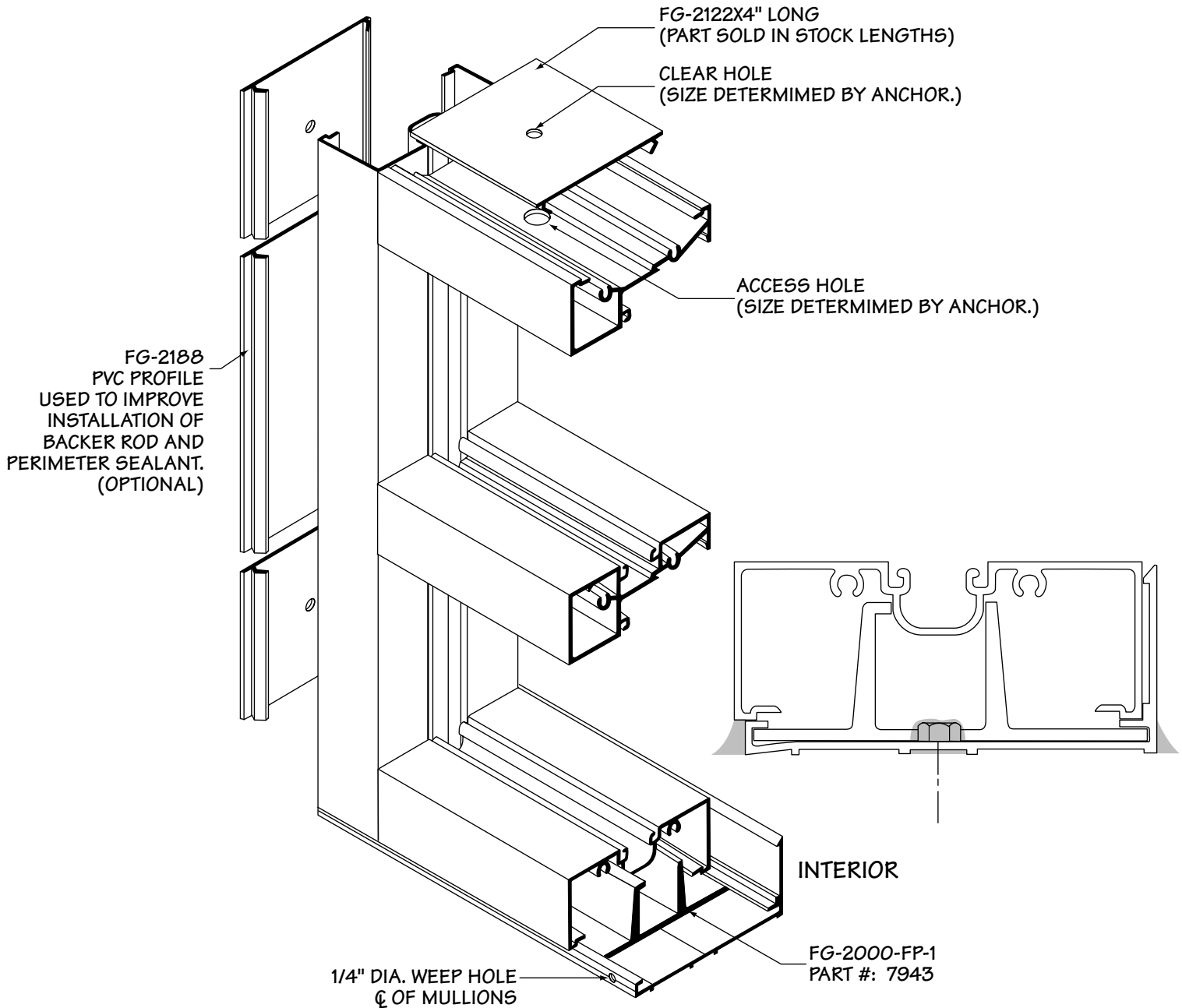


SILL SPLICE

NOTE: SILL FLASHING SHOULD BE LEVEL AND MAKE SURE IT IS NOT TILTED TOWARD THE INTERIOR.

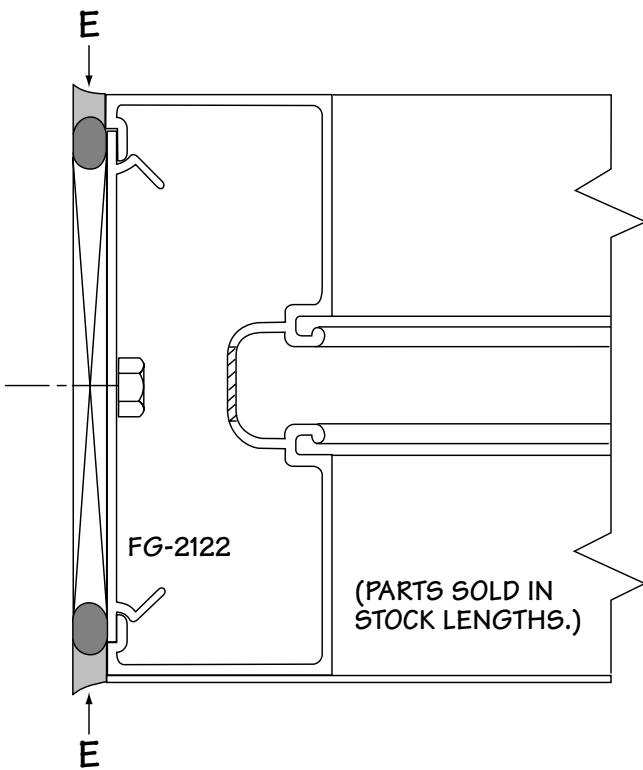
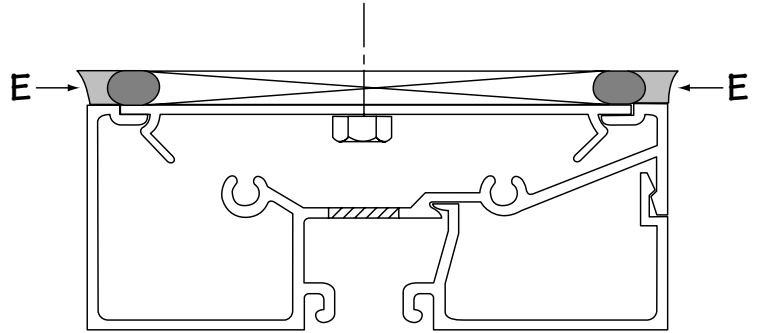


INSIDE GLAZE FRAME INSTALLATION



ANCHOR SIZE AND FREQUENCY SHOULD BE DETERMINED BY STRUCTURAL REQUIREMENTS. SILL ANCHORS FG-1000-FP3/FG-2000-FP-3 AND HEAD ANCHORS FG-1122/FG2122 SHOULD BE LOCATED SO THAT THE ANCHOR IS NOT MORE THAN 4" FROM EACH SIDE OF THE MULLION.

INSIDE GLAZE SILL INSTALLATION AND PERIMETER SEAL



APPLY SEALANT ALONG LENGTH OF SUB SILL AT AREAS A & B.

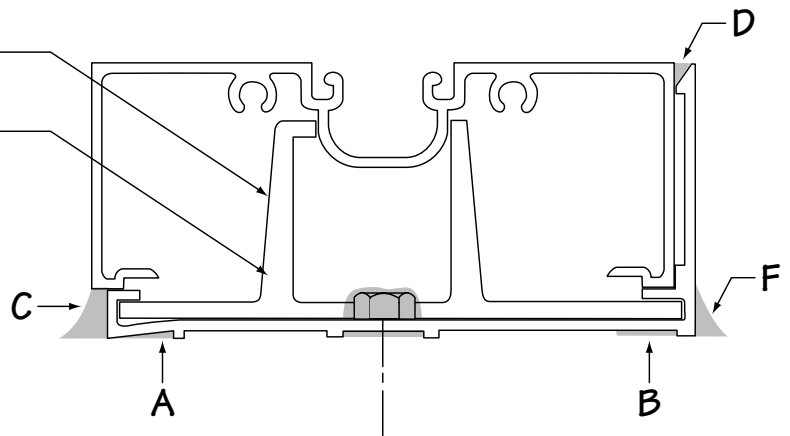
LAY FLASHING ON SLAB AND SHIM ONLY AT LOW AREAS. RESEAL AT SHIM AREAS.

SPACE BETWEEN SILL AND FLASHING (C) TO BE CONTINUOUSLY SEALED EXCEPT FOR 1/4" DIA. WEEP HOLE UNDER VERTICAL MULLIONS FOR WEEPAGE. ONCE THE WALL IS SECURED, SEAL V GROVE (D) BETWEEN SILL FLASHING AND BACK OF SILL FLASHING AND BACK OF SILLS.

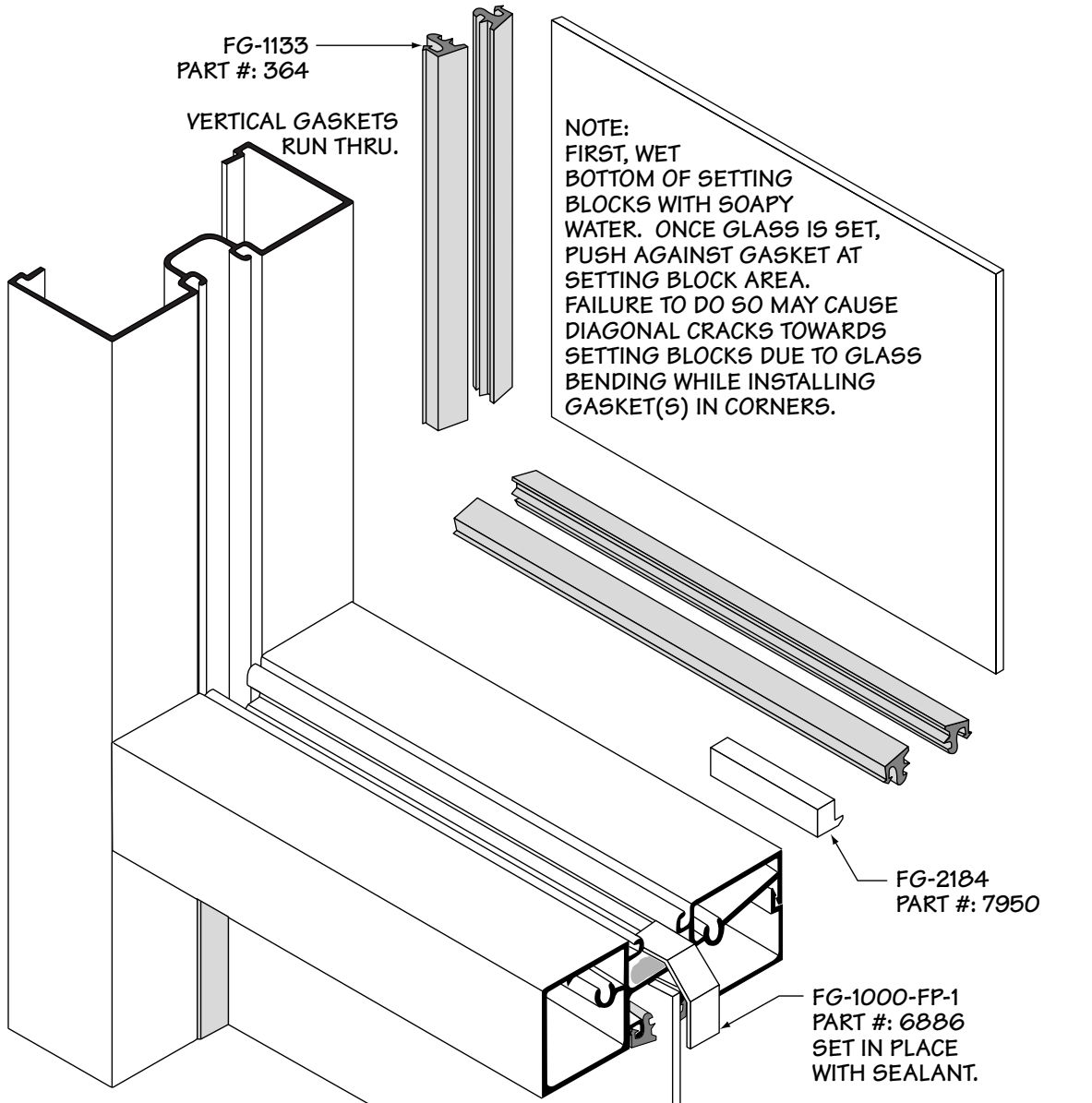
THE QUALITY OF THE INSIDE AND OUTSIDE PERIMETER SEALS (C AND E) MAY BE IMPROVED BY USING FG-1192/FG-2188 RIGID PVC FILLER. THE PART MAY BE USED IN FULL LENGTHS OR CUT INTO PIECES. ITS PURPOSE IS TO PROVIDE SUPPORT FOR THE BACKER ROD REGARDLESS OF JOINT OR SIZE. PERIMETER SEAL (F) IS FOR COSMETIC PURPOSES AND IS OPTIONAL.

THIS LEG MUST BE TO THE EXTERIOR
 FG-2000-FP-1
 PART #: 7943

NOTE: 1/4" WEEP HOLE REQUIRED IN FLASHING (C) AT CENTER LINE OF MULLION.



INSIDE GLAZE GLAZING PROCEDURE



GLAZING INSTALLATION INSTRUCTIONS

GLASS SIZE
5/8" OVER DAY LIGHT OPENING

SETTING BLOCK
SET AT 1/4 POINT OR 1/8 POINT OF HORIZONTAL LENGTH DEPENDING ON LITE SIZE.

WATER DIVERTERS
GLAZE FROM BOTTOM TO TOP. INSTALL WATER DIVERTERS IN HORIZONTAL ABOVE, AFTER LITE BELOW IS IN POSITION.

GLAZING GASKET
GASKET MAY BE INSTALLED ON ONE OR BOTH SIDES SIMULTANEOUSLY. PROVIDE 3/8" ADDITIONAL GASKET FOR EACH FOOT OF DAYLIGHT OPENING TO PROVIDE ADEQUATE COMPRESSION FOR THE GLAZING INFILL.

NOTE: CLEAN GASKET WITH ISOPROPYL ALCOHOL PRIOR TO SEALING CORNERS.

