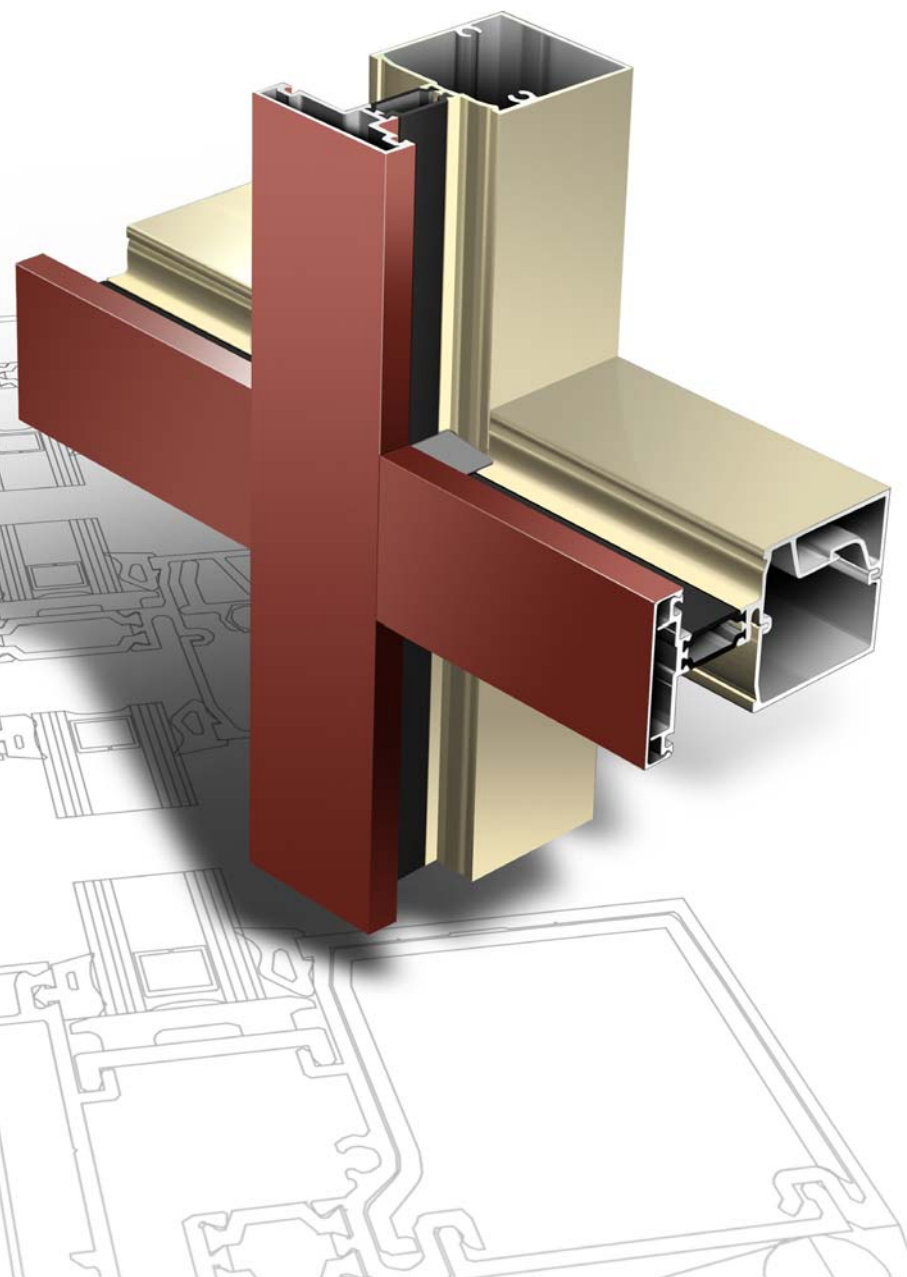


# TCR-250 Thermal Composite Ribbon Window



The TCR-250 Ribbon Window from Vistawall takes you to the next step of thermal performance. This new ribbon window system offers a full line of accessories to accommodate various door framing and anchoring options. An optional head detail allows for alternate anchoring at conditions requiring incidental water control.

The TCR-250 system has been tested to the same level of performance as Vistawall's other products, which gives you the assurance of a quality product that will offer enhanced thermal performance in today's energy-conscious environment.

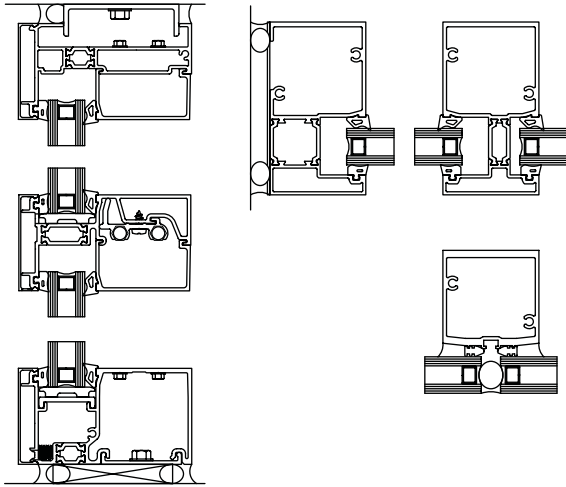
#### FEATURES:

- Overall system dimensions: 2 1/2" x 4 1/2"
- Front set, inside glazed configurations
- Continuous head and sill members
- Glass reinforced polyamide insulating strip thermal breaks on all members for superior thermal performance
- SSG glazing with molded bridge
- Shear block assembly
- Door frame components
- Complete 90° corners
- Optional incidental water management at head
- Two-color finishing capability
- Factory-painted KYNAR 500 / HYLAR 5000 finishes, meeting all provisions of AAMA 2605
- Factory-anodized finishing

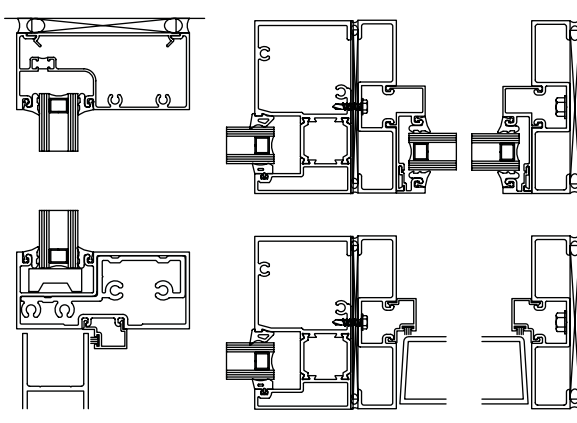
KYNAR 500 is a registered trademark of Atofina.  
HYLAR 5000 is a registered trademark of Ausimont USA, Inc.  
Vistawall is a registered trademark of BlueScope Steel Company.

# TCR-250 Thermal Composite Ribbon Window

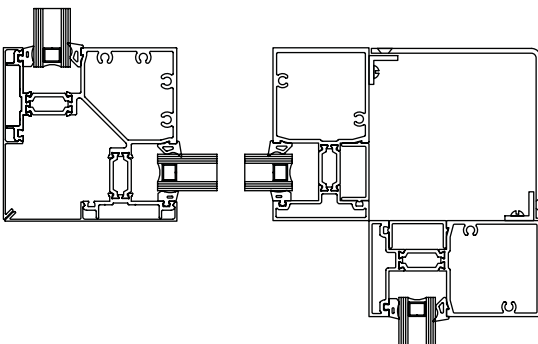
Typical Details



Entrance Details



Transition Details



## PERFORMANCE:

### Air Infiltration

<.06 CFM/sq.ft. (6.24 PSF) per ASTM E283

### Static Water

15 PSF per ASTM E331

### Deflection Load

35 PSF per ASTM E330

### Structural Load

52.5 PSF per ASTM E330

### STC

32 with Standard 1" Insulating Glass

37 with Double Laminated 1" Glass

### Thermal Performance per AAMA 1503 for Clear 1" Insulating Glass:

U-factor = 0.55, CRF frame = 69

### NFRC Tested and Certified

Vistawall locations:

#### Headquarters

P.O. Box 629, Terrell, TX 75160

972-551-6100

[www.vistawall.com](http://www.vistawall.com)

Atlanta, GA

Charlotte, NC

Chicago, IL

Cincinnati, OH

Cleveland, OH

Dallas, TX

Denver, CO

Detroit, MI

Houston, TX

Los Angeles, CA

Minneapolis, MN

Modesto, CA

Newnan, GA

Sacramento, CA

San Francisco, CA

Seattle, WA

St. Louis, MO

Tampa, FL

Terrell, TX

Warwick, RI

Washington, DC